

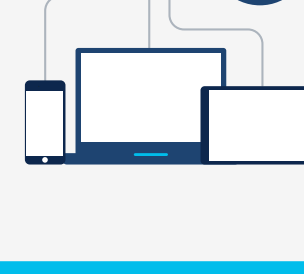
5 Things to Know About Wi-Fi 6 and 5G



1 Both Wi-Fi 6 and 5G are built from the same foundation



Immersive Experience
Support new applications and use cases



IoT at Scale
Support explosion of access, traffic and devices

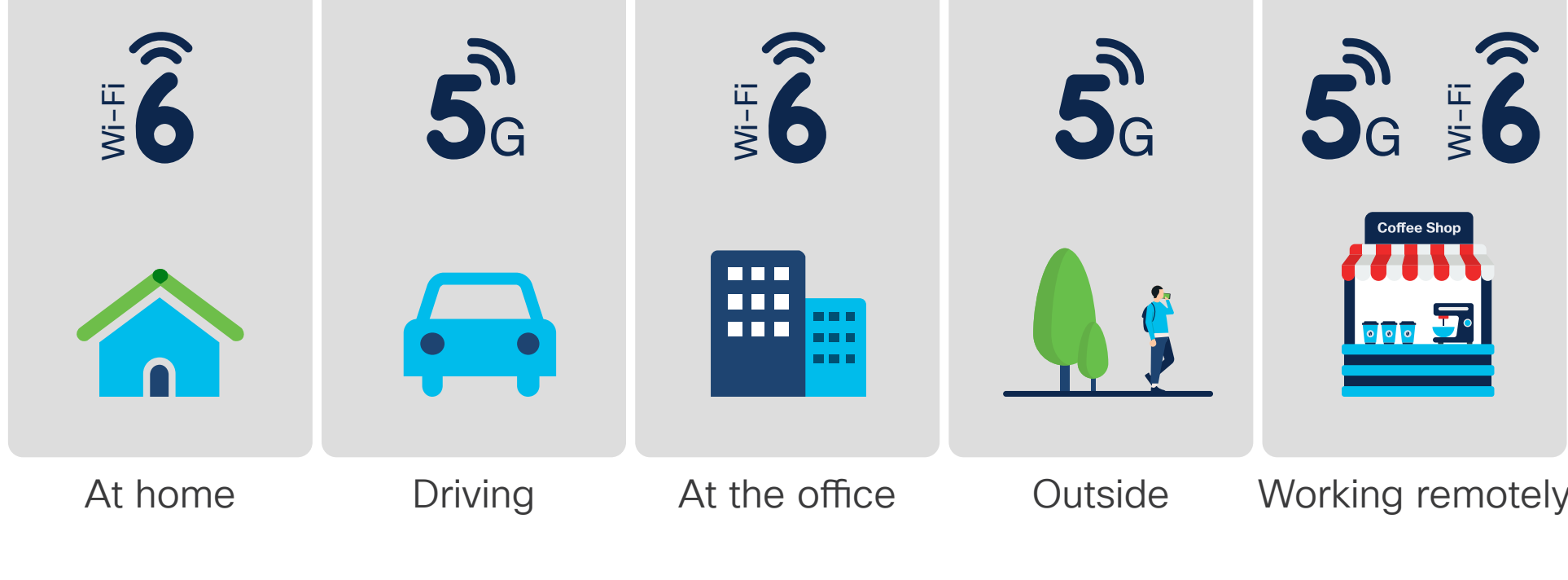
High Throughput | Low latency | High Capacity

They both provide higher data rates to support new applications and increases in network capacity with the ability to connect more users and devices.

2 They will co-exist and work better together to support different use cases

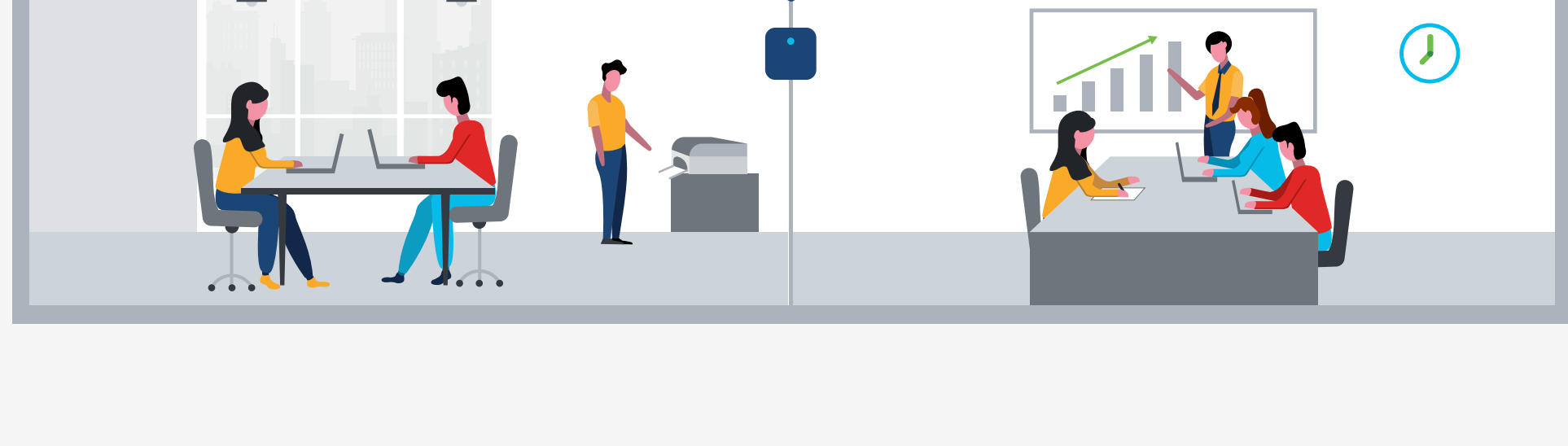
Both 5G and Wi-Fi 6 bring a promise of dramatically better performance to consumers, mobile workers and the organizations.

A Day in the life! Uninterrupted wireless access while...



3 Wi-Fi 6 will continue to be the access choice for indoor networks

With improvements in speed, latency, and higher density of connected devices, Wi-Fi 6 is ideal for indoor enterprise networks.



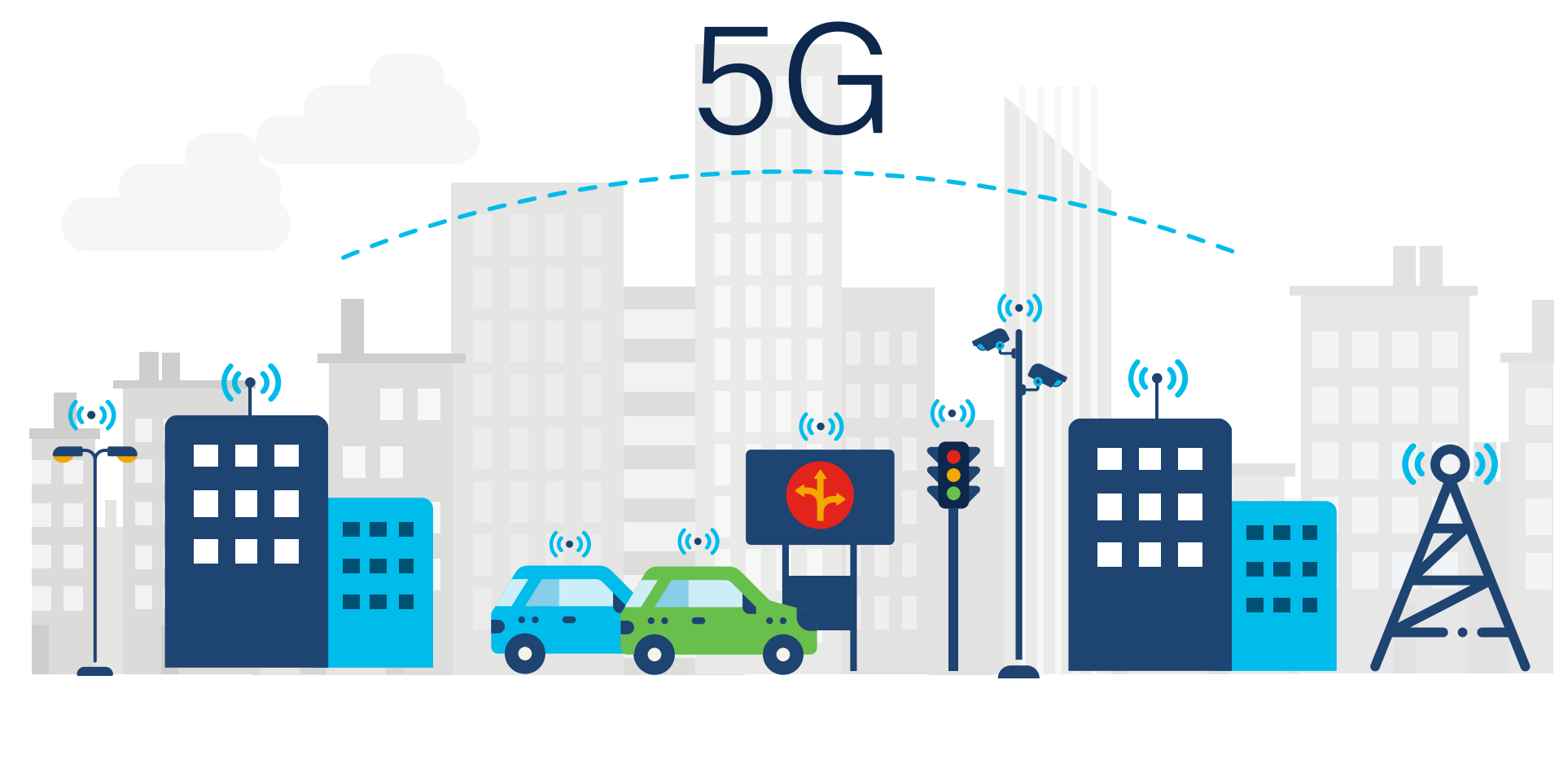
It's also an ideal system in areas where access points will serve more users, such as stadiums and convention centers.

Stadiums or Event centers



4 5G will be the designated choice for outdoor networks

5G hasn't fully rolled yet. However, the early businesses cases include fixed wireless (broadband backhaul), connected cars, drones and smart cities make it the preferred method for outdoor networks.



5 Wi-Fi 6 and 5G expand opportunities for digitization across all industries

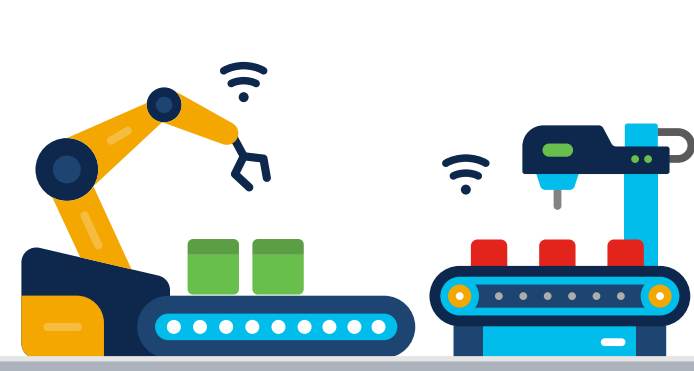
Both Wi-Fi 6 and 5G offer exciting opportunities to connect more mission critical IoT devices reliably via wireless.

Wi-Fi 6 and 5G will also offer enhanced mobile broadband for immersive experience via augmented and virtual reality.

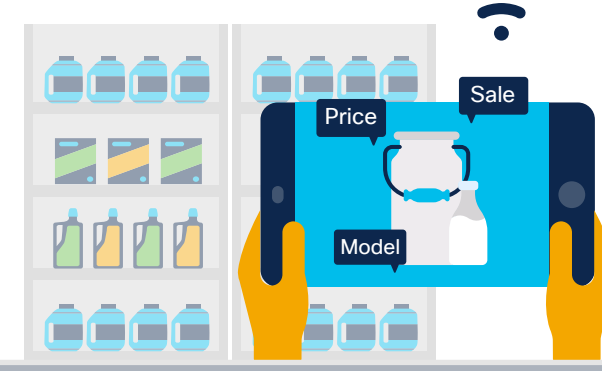
152k number of connected IoT devices per second by 2025*

12x increase in AR/VR traffic between 2017 and 2022**

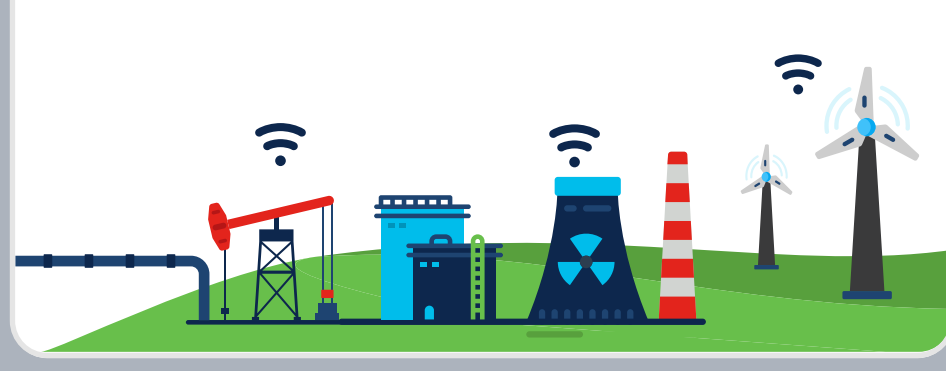
Manufacturing



Retail



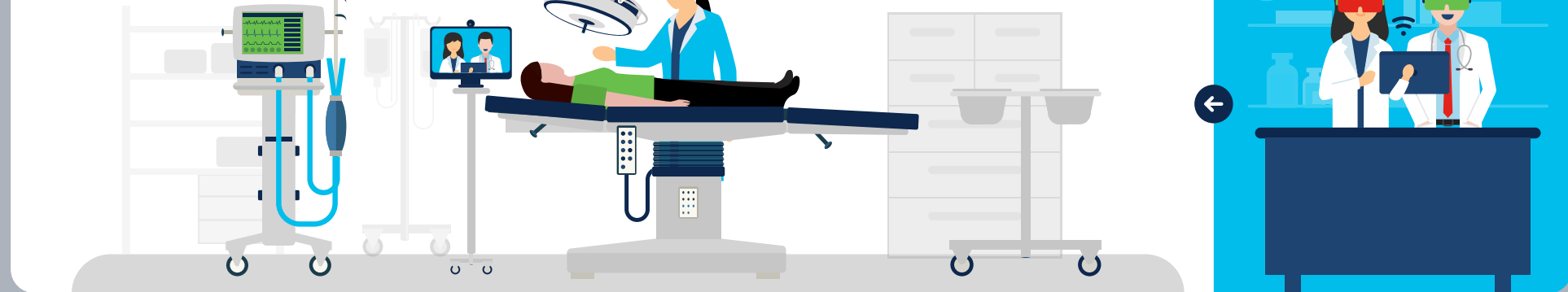
Energy



Education



Healthcare



*IDC
**Cisco Visual Networking Index Complete Forecast Update, 2017-2022

Visual Networking Index Complete Forecast Update, 2017-2022

Wi-Fi 6 and 5G introduce the new era of wireless access. Their convergence enables organizations to do business anywhere while increasing productivity and offering the best user experience



[Learn more about Wi-Fi 6](#)

[Learn more about 5G](#)